

Ușor și laconic, Soul reinterpretează spațiile. Formele liniare sunt o expresie a evoluției, îmbinarea stilată dintre colectorul rotund și profilul plat conferă bătăi personalitate. Disponibil în 3 variante de înălțime și 1 lățime.



Soul, vertical, înălțimea 1418 mm, lățime 550 mm, Alb Standard

Caracteristici Tehnice

elemente orizontale din oțel 50x10 mm
colectoare din oțel Ø 30 mm
filetarea extremității colectorului superior și inferior 1/2" G dx
presiunea maximă de lucru admisă 4 bar
temperatura maximă de lucru admisă 95°C
conexiune 50 mm

Standard equipment

4 console fix pentru fixarea pe perete, de aceeași culoare cu caloriferul
2 aerisitoare de 1/2" ascunse și elemente de acoperire

Certifications



Plus



Date tehnice

Model	Depth (mm)	Height (mm)	Width (mm)	Conn. C. (mm)	Weight (kg)	Capacity (lt)	$\Delta t=60^{\circ}\text{C}$ (Watt)	$\Delta t=50^{\circ}\text{C}$ (Watt)	$\Delta t=40^{\circ}\text{C}$ (Watt)	$\Delta t=30^{\circ}\text{C}$ (Watt)	$\Delta t=20^{\circ}\text{C}$ (Watt)	Exponent	mixed oper. (Watt)
DX													
1054 14 țevi 3 spații	50,0	1054	550	50	9,60	3,90	600,0	478,0	362,0	253,0	152,0	1,249	400
1418 19 țevi 4 spații	50,0	1418	550	50	12,90	5,30	796,0	633,0	479,0	334,0	201,0	1,253	700
1754 25 țevi 4 spații	50,0	1754	550	50	16,80	6,90	1.032,0	821,0	621,0	433,0	261,0	1,252	1000
SX													
1054 14 țevi 3 spații	50,0	1054	550	50	9,60	3,90	600,0	478,0	362,0	253,0	152,0	1,249	400
1418 19 țevi 4 spații	50,0	1418	550	50	12,90	5,30	796,0	633,0	479,0	334,0	201,0	1,253	700
1754 25 țevi 4 spații	50,0	1754	550	50	16,80	6,90	1.032,0	821,0	621,0	433,0	261,0	1,252	1000

(*) Grație prestațiilor ridicate ale corpurilor încălzitoare Irsap Soul, se consideră ideale pentru proiectarea la joasă temperatură un Δt la 30°C

Pentru $\Delta t \neq 60^{\circ}\text{C}$ utilizați formula: $Q=Q_n (\Delta t / 60)n$

Standard equipment

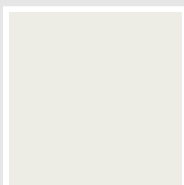
- 4 console fix pentru fixarea pe perete, de aceeași culoare cu caloriferul
- 2 aerisitoare de 1/2" ascunse și elemente de acoperire

Packing

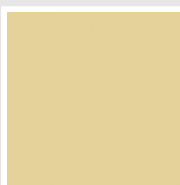
Atenția pe care Irsap o rezervă fiecărui calorifer se manifestă și în grija pentru ambalaj. Fiecare produs este protejat de un material antișoc care previne zgârieturile și deteriorările accidentale pe parcursul transportului sau a manipulării pe șantier. Toate ambalajele trebuie colectate și reciclate conform legislației în vigoare.

Colori e finisaje

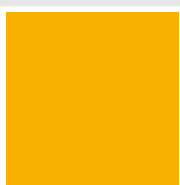
CLASSIC



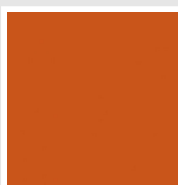
Bianco Edelweiss
Cod. 34



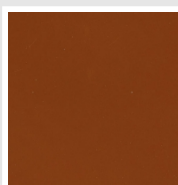
Beige Cream
Cod. 26



Giallo Melone - RAL
1028
Cod. E7



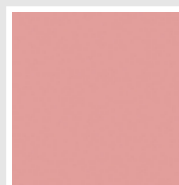
Arancio - RAL 2004
Cod. 17



Marrone Ruggine -
RAL 8004
Cod. E1



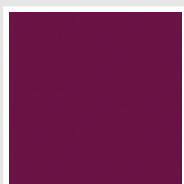
Rosso Fragola - RAL
3018
Cod. Y3



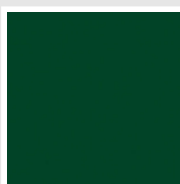
Rosa - RAL 3015
Cod. R2



Lilla Bluastro - RAL
4005
Cod. R3



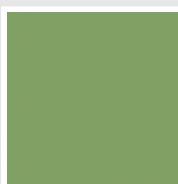
Porpora Traffico -
RAL 4006
Cod. R6



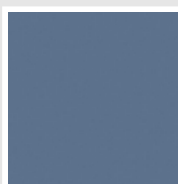
Verde Bosco - RAL
6005
Cod. 19



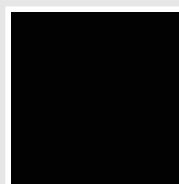
Verde Erba - RAL
6018
Cod. N3



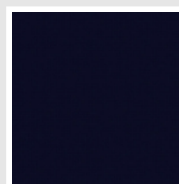
Verde Salvia - RAL
6021
Cod. E6



Blu Pastello - RAL
5024
Cod. G7

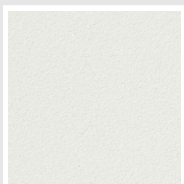


Nero - RAL 9005
Cod. 10

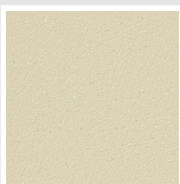


Deep Blue
Cod. 2F

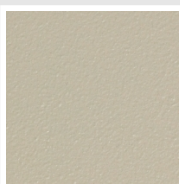
SPECIAL



Bianco Perla
Cod. 16



Quartz 1
Cod. 1C



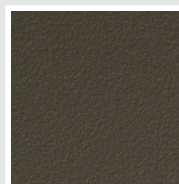
Sablé
Cod. Y4



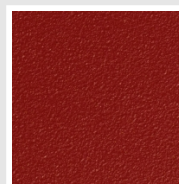
Quartz 2
Cod. 2C



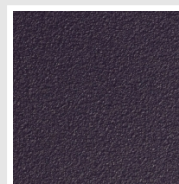
Sunstone
Cod. 2D



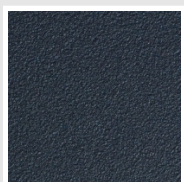
Bruno Tabacco
Cod. 1B



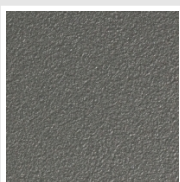
Flame Red
Cod. 7D



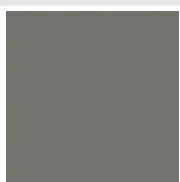
Purple Blue
Cod. 1D



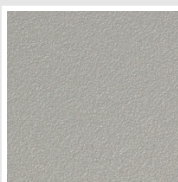
Azurite 3
Cod. 6C



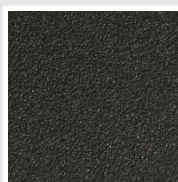
Grigio Medio
Cod. 4D



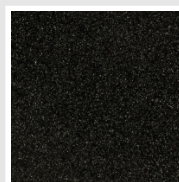
Grigio Titanio
Metallizzato - RAL
9023
Cod. L3



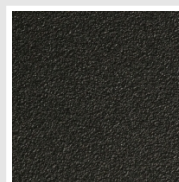
Grigio Perla
Cod. L6



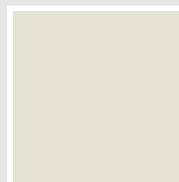
Nero Grafite
Cod. 18



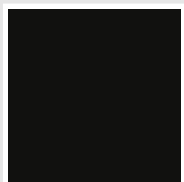
Grigio Quarzo
Cod. 31



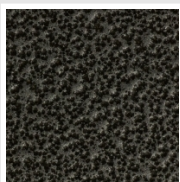
Nero Satinato
Cod. 30



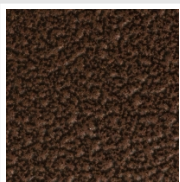
Bianco Opaco
Cod. J8



Nero Opaco
Cod. K1



Grigio Martellato
Cod. 32



Rame Martellato
Cod. J4

SURFACES



Trattamento Loft
Cod. TR

The Colors used in this folder are not considered binding. The different technological painting processes and the materials used for the realization can not have a perfect color match with the delivered product. Irsap company reserves the right to introduce at any time whatever modifications necessary to the improvement of the product.